

B O R N  
R A R E

MARINA ONE

PURAVANKARA • SOBHA

# UNPARALLELED

*Kochi, recently ranked the topmost emerging future megacity in India, reflects the true character of a metropolis. Marina One is located on Marine Drive, a picturesque promenade in the heart of Kochi.*

*With educational institutions, hospitals, and shopping centres in the vicinity, the project offers modern-day conveniences at your doorstep.*

*Indeed, a masterpiece creation in a rare location.*



Scan for location

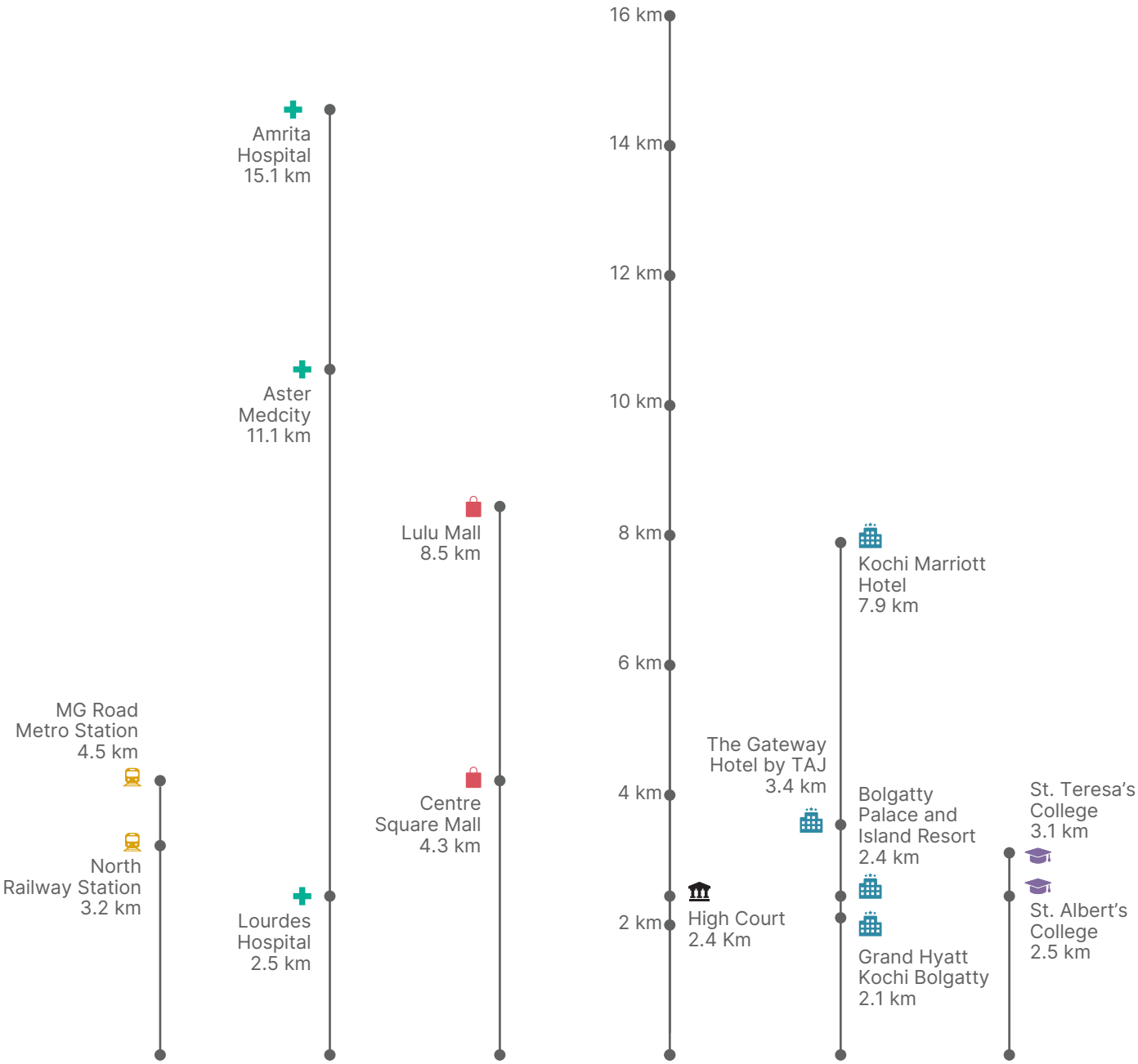
Transport 🚆

Hospital 🏥

Shopping 🛍️

Hotel 🏨

Education 🎓



MARINA ONE

# MASTER PLAN

## Features

*497 meter long water-facing frontage*

*C-shape tower placement to ensure ample light and ventilation*

*Amenities at podium level which is vehicle-free zone to ensure utmost security*

## Project Overview

|   |  |
|---|--|
| <i>Project Area</i>                       | <i>16.7 acres</i>  |
| <i>Number of Towers</i>                   | <i>12</i>  |
| <i>Number of Residences (N1 &amp; E6)</i> | <i>193</i>   |
| <i>Number of Floors</i>                   | <i>N1: 2 Stilts + 28 Floors</i><br><i>E6: 2 Stilts + 27 Floors</i> |
| <i>Clubhouse</i>                          | <i>48,000 sq. ft.</i>  |

## Unit Dimensions

### *Tower - N1*

| <i>Unit Type</i> | <i>No. of Units</i> | <i>SBA (sq. ft.)</i> | <i>Carpet Area (sq. ft.)</i> |
|------------------|---------------------|----------------------|------------------------------|
| <i>4 BHK</i>     | <i>112</i>          | <i>2928 - 3707</i>   | <i>2258 - 2751</i>           |

### *Tower - E6*

| <i>Unit Type</i> | <i>No. of Units</i> | <i>SBA (sq. ft.)</i> | <i>Carpet Area (sq. ft.)</i> |
|------------------|---------------------|----------------------|------------------------------|
| <i>3 BHK</i>     | <i>54</i>           | <i>2482 - 2511</i>   | <i>1842 - 1870</i>           |
| <i>4 BHK</i>     | <i>27</i>           | <i>3061</i>          | <i>2289</i>                  |



**Activity Zone**

- 01 Multisport Court
- 06 The Peninsula Play Park
- 07 Jogging / Bicycle Track
- 08 Skating Rink
- 09 Activity Lawns
- 11 Putting Green
- 12 Fitness Station
- 18 Kids' Playground
- 20 Changing Room
- 21 50 Metre Lap Pool
- 23 Beach Pool
- 26 Kids' Pool
- 30 Pool Plaza
- 31 BBQ Corner
- 33 Party Lawn
- 34 Tennis Court
- 35 Cricket Pitch

**Rejuvenation Zone**

- 02 Seating Alcove
- 03 Botanical Garden Walk
- 04 Bio Pond
- 05 Amphitheatre
- 10 Eco-trail Park
- 13 Step Plaza
- 14 Walkover Garden
- 15 Senior Citizens' Pavilion
- 16 Meditation Deck
- 17 Cabana Deck
- 19 Reflexology Trail
- 22 Sundeck
- 24 Stargazers' Ground
- 25 Tree Promenade
- 27 Coastal Pad
- 28 Beach Deck
- 29 Observation Deck
- 32 Fountain Roundabout

- N** NORTH TOWER
- E** EAST TOWER
- S** SOUTH TOWER



# UNRIVALLED

*Unusual. Unseen. Unmatched.*

*That's the soul of a phenomenon we call rare.*

*Here's to the one-of-a-kind spirit – a creation  
that is above and beyond the ordinary.*





# UNBELIEVABLE

*Launching premium towers with unparalleled panoramic views of pristine blue waters and the well-planned central urban park. The new N1 & E6 towers are the most sought-after at Marina One, with endless views of meandering clouds and the soothing morning breeze. Here's a setting you will own and cherish for a lifetime.*

# UNSEEN

*At Marina One, you will 'C' the difference.*

*The tower layout has a unique C-shaped design that ensures residents have a view of the water and the central urban park. A seamless architectural design that makes way for convenience, comfort, and class.*







Concept image



# UNEQUALLED

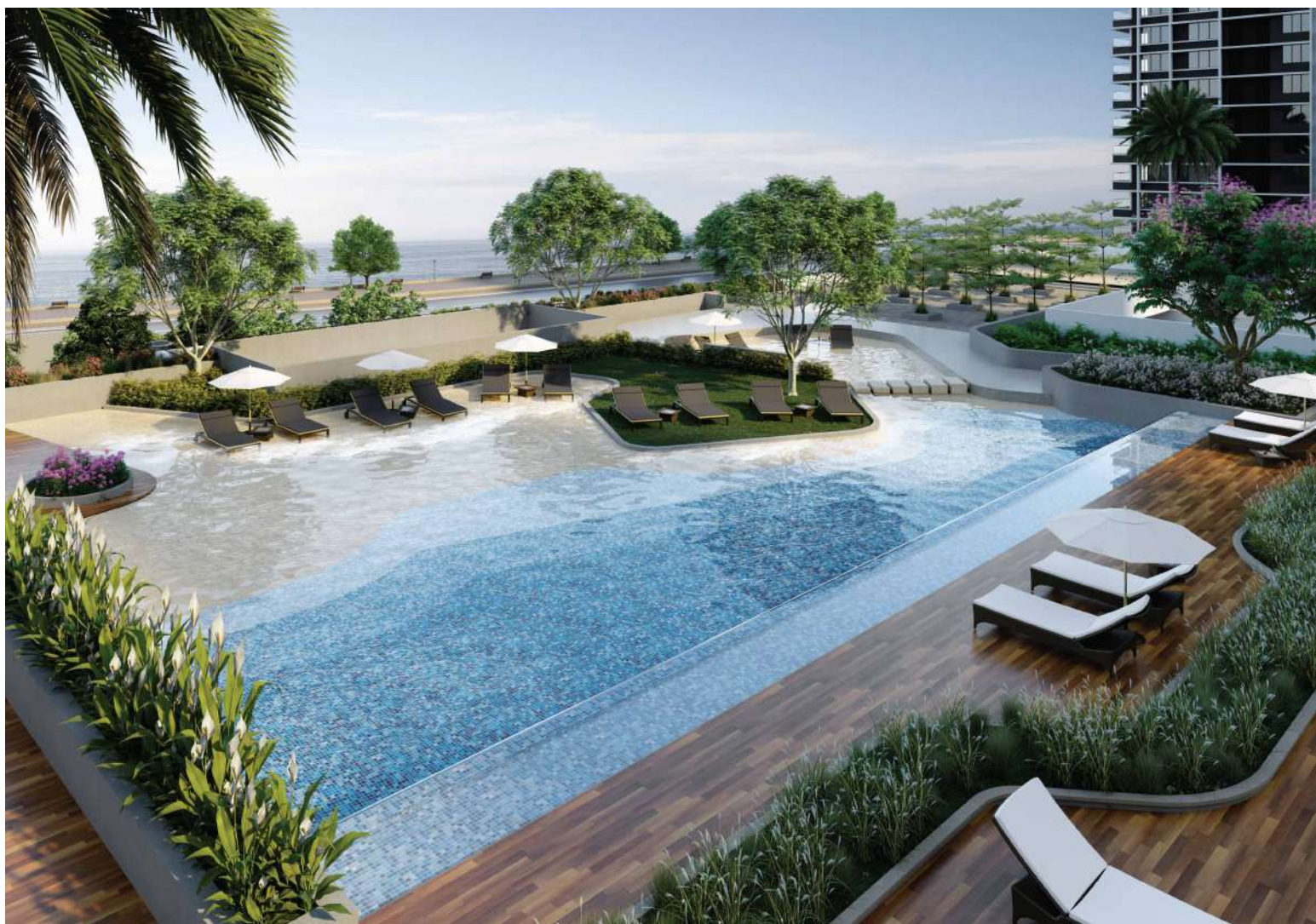
*Get used to not-so-common pleasures.  
Pause by the 50-metre lap pool, after those lengthy  
boardroom discussions. Relax, for you've arrived  
at the destination where only the doers belong.*

# UNHEARD

*Aqua therapy of a new kind.*

*Discover the sunny side up at the private beach pool  
that is designed to give you the true beachside experience.*

*Go ahead, take that leisurely dip in style.*



# UNCOMMON

*Ace masters welcome!*

*Recharge your weekends with a round of golf  
and master that perfect golfing shot at your own  
exclusive one-acre waterfront golf course.*



Concept image



# UNCHALLENGED

*You take challenges head on.*

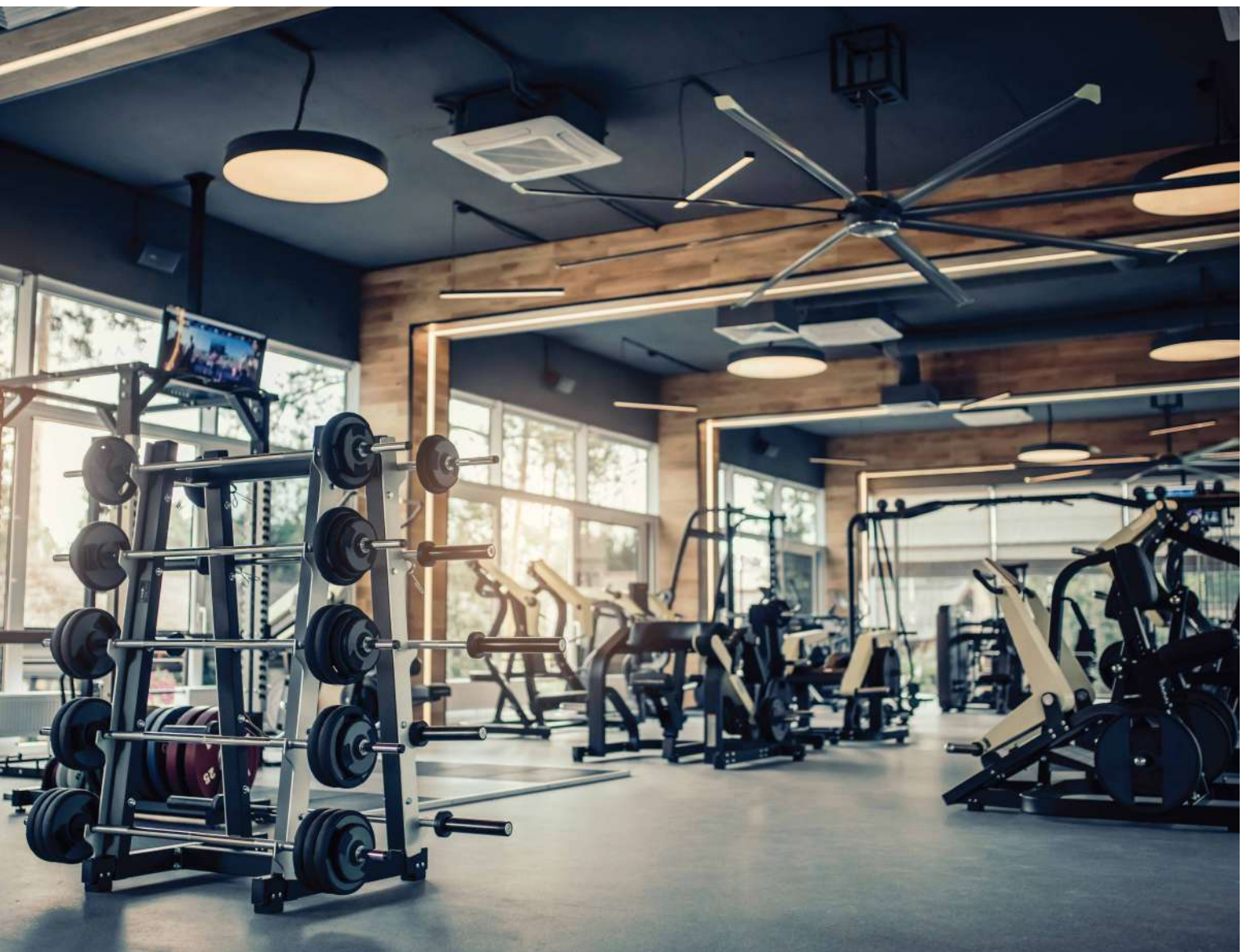
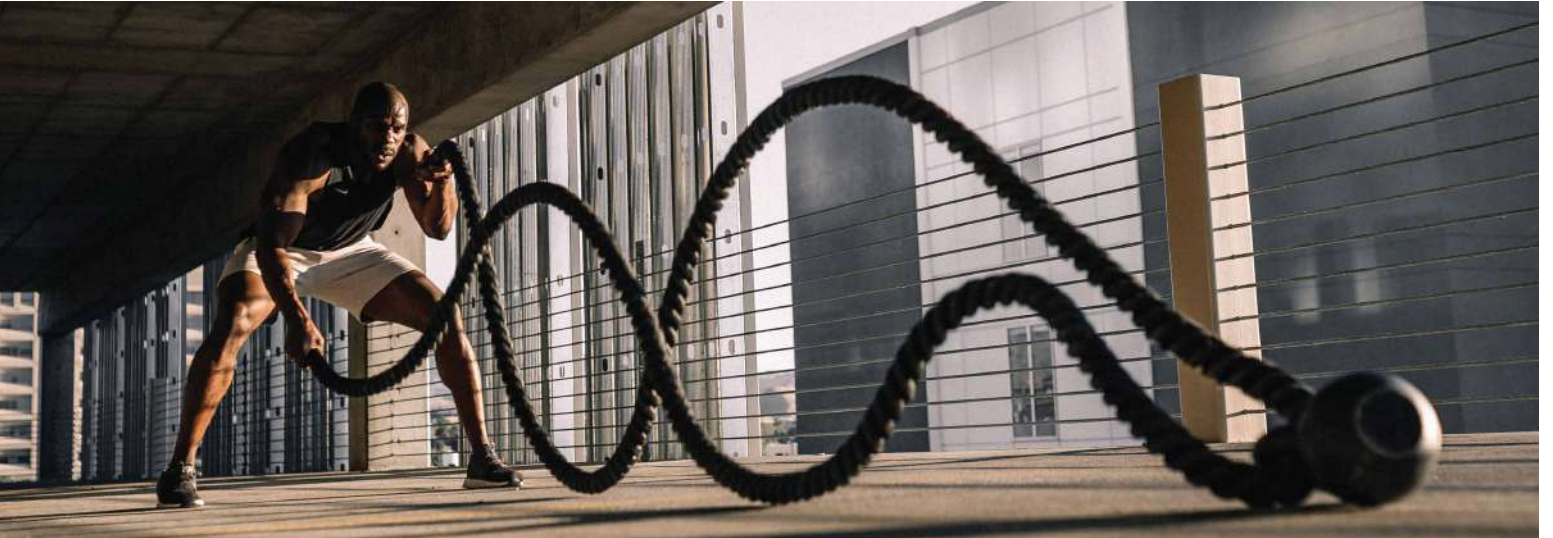
*You never pause without spending a hard day at work.*

*Here's a space designed in the footsteps of Dutch architectural brilliance. Come, relax and network with your peers, at the 48,000 sq ft clubhouse.*



# UNSTOPPABLE

*Follow a fitness regime that will suit your lifestyle.  
The grand 5,000 sq ft fitness centre, with ultra-modern  
equipment, has everything to inspire a healthy living.*





# UNFORGETTABLE

*An experience like no other.*

*Now, enjoy your favourite flicks or watch  
live matches with your family and friends.*

*Block your evening at the private theatre  
which is just a hop, skip, and a jump away.*



Concept image



shot  
at  
site

# UNCONVENTIONAL

*A space that lets you live large.*

*The thoughtfully designed living spaces  
welcome ample light & air, and makes way  
for singular views of the turquoise waters.*

# UNCOMPROMISING

*The uncomplicated open kitchen design conforms to the work triangle principle, seamlessly blends with the living room – giving large open spaces for those weekend parties.*

shot  
at  
site



Concept image



# UNDISTURBED

*Wake up to refreshing mornings,  
welcoming abundance of natural light and air.  
Celebrate the luxury of space as your private sanctuary  
comes with a swanky walk-in wardrobe.*

shot  
at  
site



Marina One, GIDA Road - Queens Way, Marine Drive, Kochi, Kerala 682018

☎ 080 4646 4599    ✉ info@marinaone.in

---

Phase 1: K-RERA/PRJ/251/2020 | Phase 2: K-RERA/PRJ/252/2020

Phase 3: K-RERA/PRJ/253/2020 | Phase 4: K-RERA/PRJ/ERN/076/2023 | [rera.kerala.gov.in](http://rera.kerala.gov.in)

DISCLAIMER: This document is conceptual and not a legal offering by the Company for advertising and is to be used for general information only. Any interested party should verify all the information including designs, plans, specifications, facilities, features, payment schedules, terms of sales, etc. independently with the Company prior to concluding any decision for buying in any of the project. The user of the brochure confirms that he / she has not solely relied on this information for making any booking / purchase in any project of the Company. The visuals and information contained herein marked as "artist's impression" are artistic impressions being indicative in nature and are for general information purposes only. The visuals contained marked as "concept image" and other visuals / image / photographs are general images and do not have any correlation with the project. The imagery used in the brochure may not represent actuals or may be indicative of style only. Photographs of interiors, surrounding views and location may not represent actuals or may have been digitally enhanced or altered. These photographs may not represent actuals or may be indicative only. Computer generated images, walkthroughs and render images are artist's impressions and are an indicative of the actual designs. No information given in this brochure creates a warranty or expand the scope of any warranty that cannot be disclaimed under the applicable laws. The information in this brochure is presented as general information and no representation or warranty is expressly or impliedly given as to its accuracy. While enough care is taken by the Company to ensure that information in the brochure are up to date, accurate and correct, the readers / users are requested to make an independent enquiry with the Company before relying upon the same. Nothing in the brochure should be misconstrued as advertising, marketing, booking, selling or an offer for sale or invitation to purchase a unit in any project by the Company. The Company is not responsible for the consequences of any action taken by the viewer relying on such material / information in this brochure without independently verifying with the Company.

*marinaone.in*